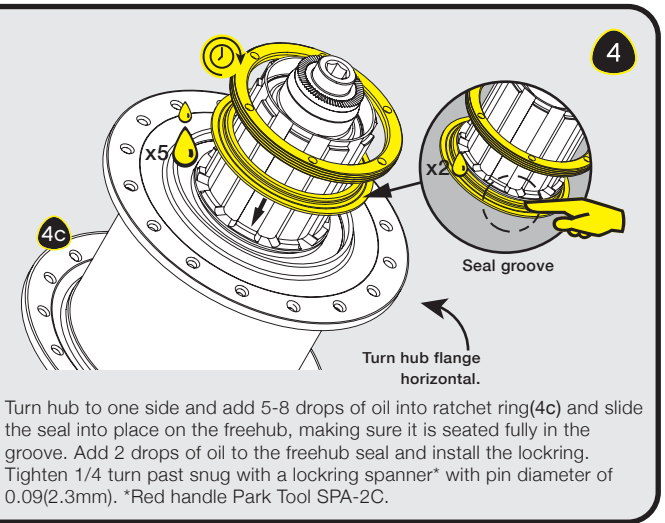
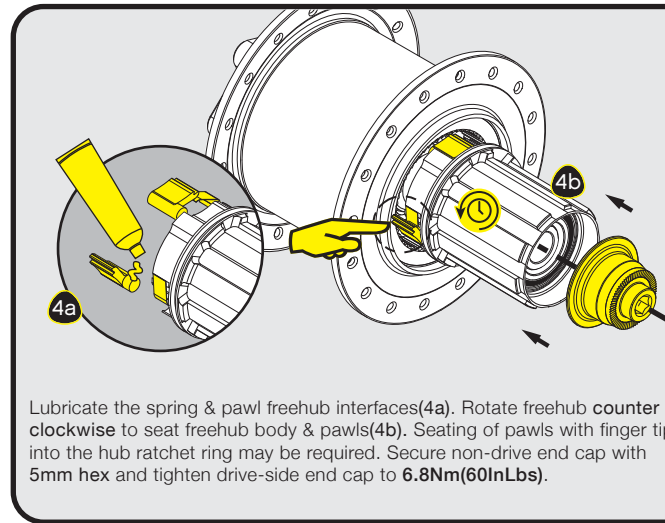
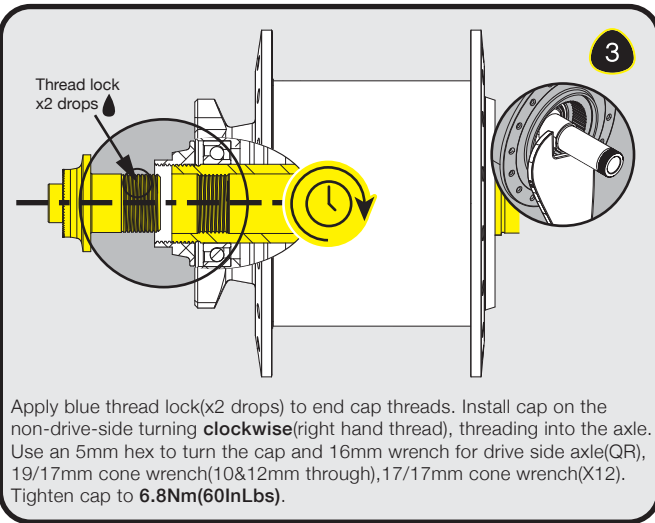
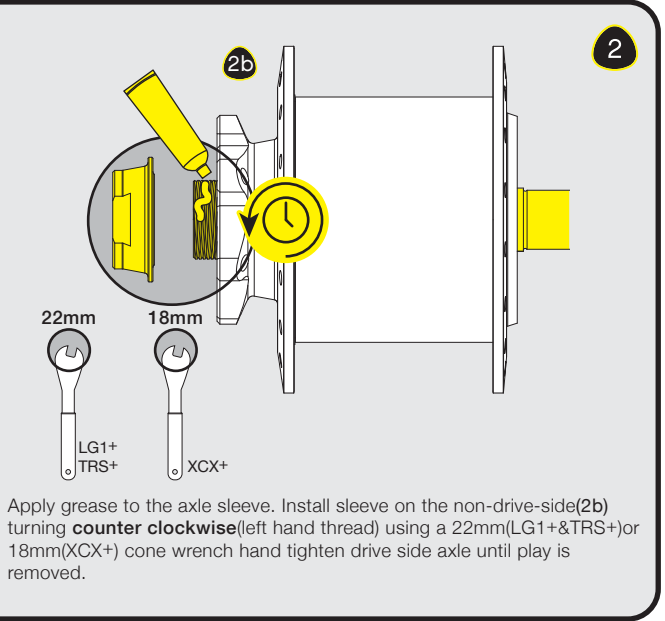
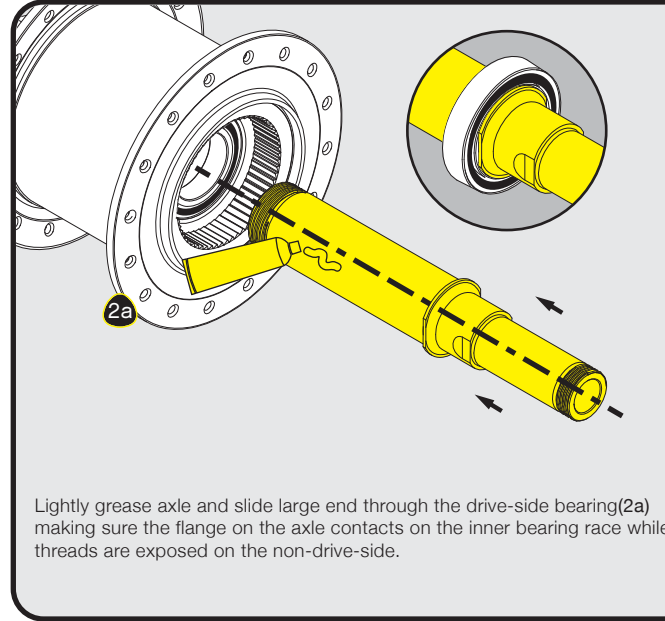
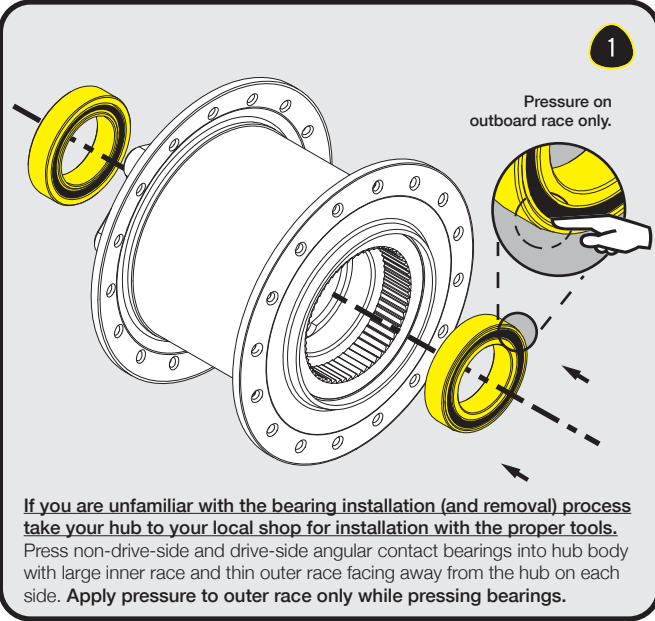
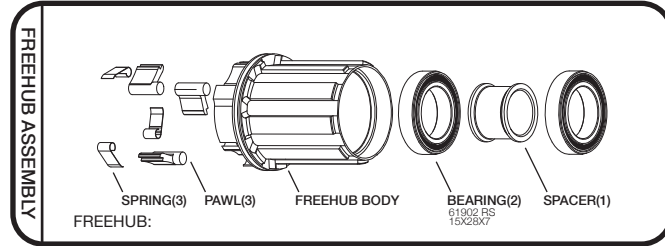
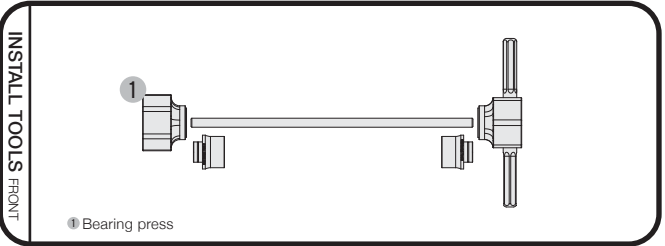


**ENDCAP / AXLE CHART**

HUB	AXLE	ENDCAP	DS / NDS	BEARING
XCX	135MM CH0139	QR	CH2124 / CH2140	15x28x7 2RS
	142MM CH0187	X12	CH0186 / CH2235	15x28x7 2RS
TRS	135MM CH0069	QR	CH2124 / CH2113	20x32x7 2RS
	135MM CH0069	D10	CH0054 / CH0053	20x32x7 2RS
	135MM CH0069	D12	CH0079 / CH0070	20x32x7 2RS
	142MM CH0184	X12	CH0186 / CH0185	20x32x7 2RS
LG1	150MM CH0068	D12	CH0079 / CH0070	20x32x7 2RS
	150MM CH0068	X12(157)	CH0186 / CH0185	20x32x7 2RS

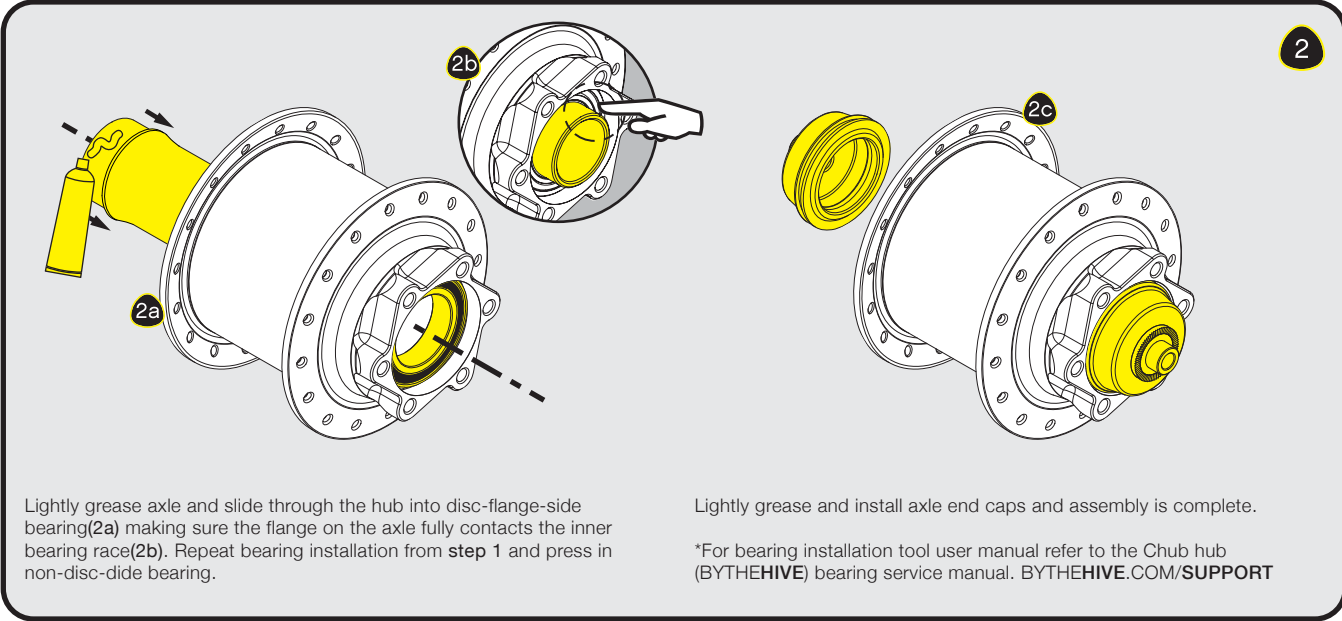
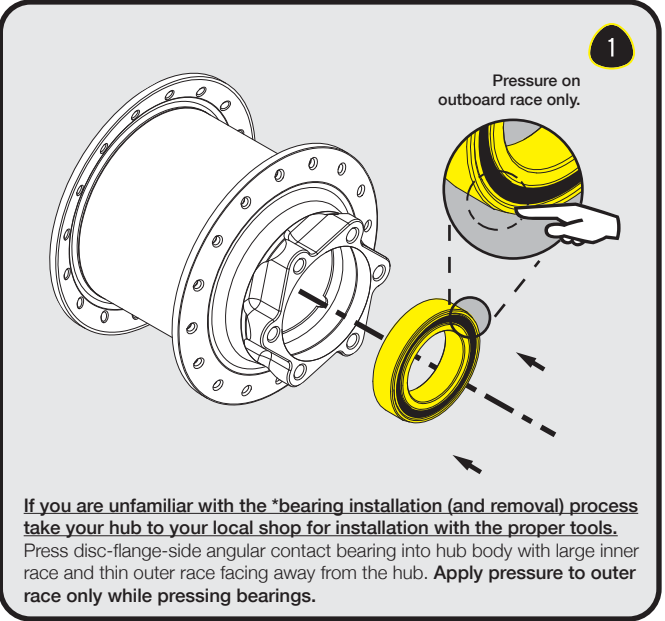
**ANGULAR CONTACT BEARING**





ENDCAP / AXLE CHART

FRONT BEARINGS	HUB	AXLE	ENDCAP	DS / NDS	BEARING
XCX	OLD:100mm CH0196	QR	CH0198 / CH0198	AC 20x32x7 2RS	
	OLD:100mm CH0196	15MM	CH0197 / CH0197	AC 20x32x7 2RS	
TRS	OLD:100mm CH0193	15MM	CH0195 / CH0195	AC 25x37x7 2RS	
	OLD:110mm CH0193	20MM	CH0194 / CH0194	AC 25x37x7 2RS	
LG1	OLD:100mm CH0193	QR	CH0157 / CH0157	AC 25x37x7 2RS	
	OLD:100mm CH0193	15MM	CH0195 / CH0195	AC 25x37x7 2RS	
	OLD:110mm CH0193	20MM	CH0194 / CH0194	AC 25x37x7 2RS	



WHEEL BUILDING - wheel building - WHEEL BUILDING

**E\*THIRTEEN RIMS**

XCX+ 533ERD	LG1+ 513ERD	TRS+ 533ERD	TRS+29 596ERD
-------------	-------------	-------------	---------------

If you are unfamiliar with the wheel building process, take your hub and rim to your local shop. Your friendly mechanic has a truing stand, spoke prep, spoke tension tool AND the correct size spoke wrench. Don't say we didn't warn you.

WHEEL BUILDING - wheel building - WHEEL BUILDING - wheel building - WHEEL BUILDING - wheel building - WHEEL BUILDING

**REAR HUB DIMENSIONS**

E*THIRTEEN HUBS	DS SPOKE CIRCLE DIAMETER	CL to DS	NDS SPOKE CIRCLE DIAMETER	CL to NDS	# OF HOLES
XCX+ REAR HUB	65	18.9	59	30.1	24 or 32
LG1+ REAR HUB	91	27.3	77	42	32
TRS+ REAR HUB	77	19.3	77	33.6	28 or 32
TRS+29 REAR HUB	77	19.3	77	33.6	28 or 32

**IMPORTANT!**  
Measurements provided are for e\*thirteen hubs and rims only. Spoke lengths may differ with other rim or hub assembly combinations. Check with your local shop or reference a spoke calculator prior to assembly of non e\*thirteen branded components.

WHEEL BUILDING - wheel building - WHEEL BUILDING - wheel building - WHEEL BUILDING - wheel building - WHEEL BUILDING

**FRONT HUB DIMENSIONS**

E*THIRTEEN HUBS	DS SPOKE CIRCLE DIAMETER	CL to DS	NDS SPOKE CIRCLE DIAMETER	CL to NDS	# OF HOLES
XCX+ FRONT HUB	59	34.5	59	23	24 or 32
LG1+ FRONT HUB	73	34.5	73	19.6	32
TRS+ FRONT HUB	59	28.6	59	20.9	28 or 32
TRS+29 FRONT HUB	73	34.5	73	20.9	28 or 32

**IMPORTANT!**  
-Check spoke tension and tire pressure before every ride.  
-Grease bearings after every 40 riding hours (Check hub axle and endcap compatibility endcap/axle chart 1&2).  
-Sick hucks to flat are NOT covered by the warranty broseph.